



## Lustersheen Copper Wool

### Product Parameters:

Lustersheen copper wool is produced from quality Electrolytic Tough Pitch Copper (ETP) - 110 alloy; European standard number CW004A ; UNS code C11000

Material Designation: UNS C11000 ; EN: E-Cu58 (Cu-ETP)

### Composition

- Oxygen content max 400 ppm,
- Cu min 99.90 %

### Mechanical Properties:

- EN H090 / R290
- Tensile Strength Rm N/mm<sup>2</sup> 290 - 360
- Yield Strength (0.2 %) N/mm<sup>2</sup> min 250
- Elongation % A50 / A min 4 / 6
- Hardness (HV) 90 - 110

### Fiber Diameter (approximate / average) for:

- Grade 0 = Fine                      0.03 to 0.08 mm ; 2 mils
- Grade 2 = Medium                0.06 to 0.10 mm ; 3.5 mils
- Grade 3 = Coarse                 0.10 to 0.15 mm ; 5 mils

### Product Format:

Typical 100 gr. Wad



Typical Roll in 1 & 5 LB size



**Formatted in a 100 gr / 3.5 oz wad/skein; And 1 and 5lb rolls**

# Copper Mesh Roll ~ 5 in width x 50 or 100 ft long

- ✓ 100% COPPER Made with 100% Copper , not copper alloy, no oil residues.
- ✓ ECO FRIENDLY, NO CHEMICALS - Environmentally safe, never rust like steel wool/mesh and will not leave rust stains on brick or wood
- ✓ MESH SCRUBBER - Great for cleaning easy-to-scratch/scour surfaces where steel wool may be too abrasive
- ✓ Uses as a minimally abrasive scrubber for many items.
- ✓ Use for distilling columns
- ✓ Roll of copper gauze measures 5 inches tall x 50 feet or 100 feet long (when unrolled)

## Copper Mesh Roll can be used for Pest & Rodent Control

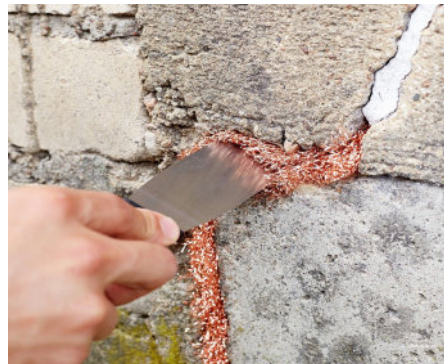
- ✓ EASY TO INSTALL, PEST CONTROL, MOUSE REPELLENT - Works great to seal weep holes and around plumbing, A/C, vents, and other places where rodents and pests enter
- ✓ Easy to cut and stuff into any crack, hole or crevice you wish (great to pack around pipes, conduit, weep holes etc)
- ✓ Use to repel mice, rats, bats, rodents, birds, insects, snakes and more from entering.
- ✓ Nonflammable:100% Copper, not Copper Alloy, Better Than Steel Wool, as steel wool can burn.



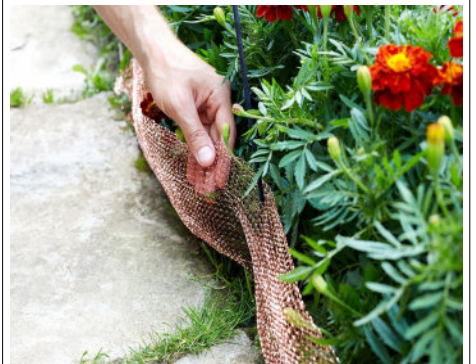
**100 Foot Roll**



**Pipe Packing**



**Packing Concrete Crack**



**Snail Stop at Garden Edge**